



WATER TECHNOLOGY

Attention: check the correspondence with the revision of your product

Model - Revision @ Code_Document version

E.SYBOX MINI 3 - GAS/220-240V/SCHUKO PLUG - N.1.- - @ 60179457 - a50

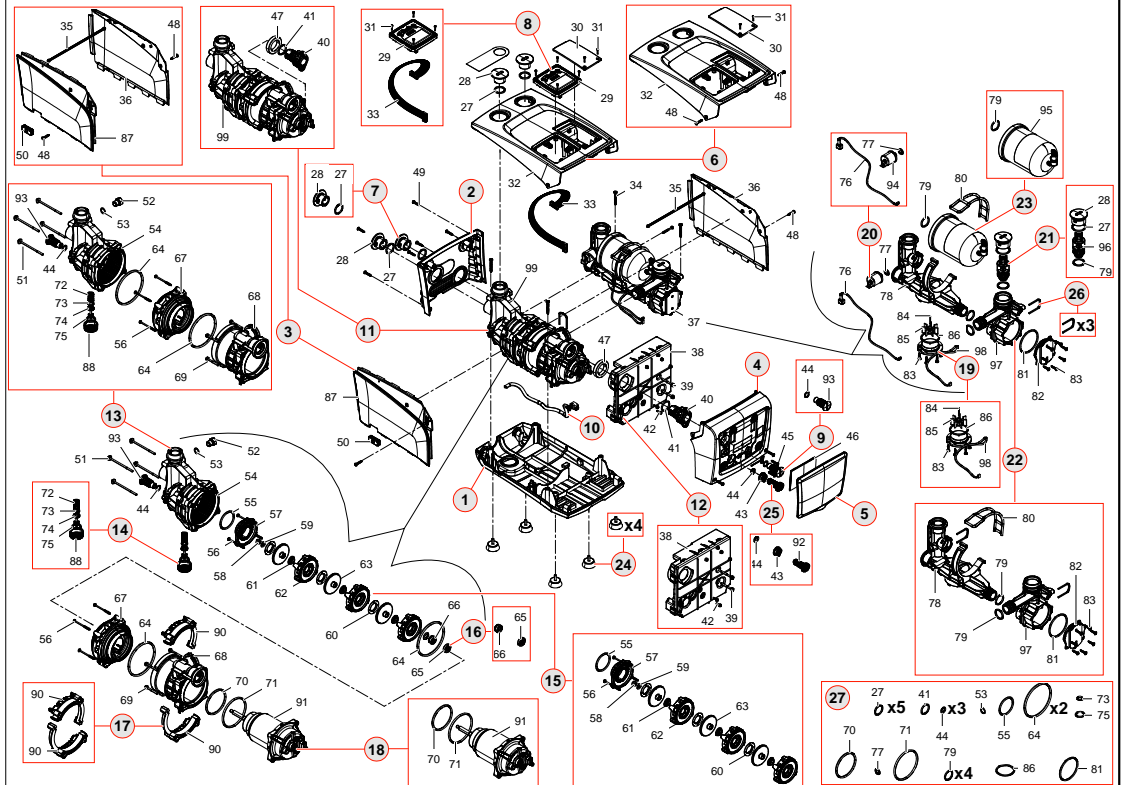
Society
Reference
Phone
Fax
E-mail

Receiver

From

Page: 3

Item	Q.ty	Item no.	Description	Unit pr.
1	1	SP00002976	(SP) LOWER SHELL WITH METAL INSERTS_MINI-3	On req.
2	1	SP00002177	(SP) FRONT SHELL WITH METAL INSERTS	On req.
3	1	SP00002178	(SP) RIGHT AND LEFT SHELL	On req.
4	1	SP00002179	(SP) BACK SHELL	On req.
5	1	SP00002180	(SP) REAR COVER	On req.
6	1	SP00002181	(SP) UPPER SHELL WITH METAL INSERTS	On req.
7	5	SP00000139	(SP) CAP 1" W/OR E.SYBOX	On req.
8	1	SP00002977	(SP) HMI ASS.Y_MINI-3	On req.
9	2	SP00002183	(SP) CHARGE PORT CAP	On req.
10	1	SP00002184	(SP) CABLE 1,85MH07RN-F SCHUKO	On req.
11	1	SP00002978	(SP) INNER PUMP_MINI 3	On req.
12	1	SP00002979	(SP) MAIN BOARD ASS.YDAB_MINI 3	On req.
13	1	SP00002980	(SP) PUMP BODY GROUP GAS_MINI 3	On req.
14	1	SP00002189	(SP) SELFPRIMING SHUTTER POM	On req.
15	1	SP00002981	(SP) COMPLETE HYDRAULIC KIT_MINI 3	On req.
16	1	SP00002667	(SP) SHAFT SEAL FA/13-24-13/B-EFF1/L - WRAS	On req.
17	1	SP00002193	(SP) HARNESS WITH NUTS	On req.
18	1	SP00002982	(SP) COMPLETE MOTOR_MINI 3	On req.
19	1	SP00002195	(SP) KIT FLOWMETER	On req.
20	1	SP00002196	(SP) PRESSURE SENSOR 0-16 BAR	On req.
21	1	SP00002197	(SP) COMPLETE NVR	On req.
22	1	SP00002198	(SP) OUTLET BODY GAS GROUP	On req.
23	1	SP00002199	(SP) TANK 100cc	On req.
24	1	SP00000145	(SP) SUPPORT BUMPERS E.SYBOX	On req.
25	1	SP00002200	(SP) KIT CAP FOR MOTOR SHAFT PORT	On req.
26	1	SP00002201	(SP) SPRING CLIP	On req.
27	1	SP00002239	(SP) KIT O-RING	On req.



Project	Project ID	Created by	Created on 28-02-19	Last update
---------	------------	------------	------------------------	-------------